



Live Tools that Reach Students and Engage Communities

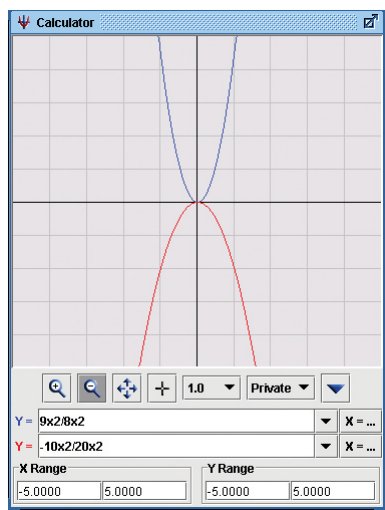
*Reach Students' Lives
with Live Tools*

Addressing the different learning styles of multiple students is one of the greatest challenges that online instructors face. Without provisions for each style of learning, an online course can leave some students behind. For course success, each student should feel completely engaged. Studies of online pedagogy show that synchronous tools, like live chat, accommodate learners of differing styles. To fully engage online students and help build an instructor-led environment, eCollege offers two synchronous learning tools, powered by Elluminate®—ClassLive™ and ClassLive Pro™.

ClassLive—Synchronous Whiteboard

eCollege's synchronous whiteboard tool, ClassLive, is a fully integrated version of Elluminate's powerful, live Web conferencing tool for education. ClassLive's whiteboard allows instructors to moderate live demonstrations, including real-time chat, shown to an entire online class. Loaded with features that enable rich classroom interaction, such as slideshows, graphing and polling, this robust whiteboard tool helps instructors engage online learners.

Using the ClassLive tool is like having an online chat session that includes a whiteboard. A math instructor can schedule a ClassLive session to demonstrate graphed, algebraic equations. The whiteboard tool includes scientific and mathematical symbols as well as a graphing calculator, making instruction easy for the class to follow. As the lesson unfolds, students can ask the instructor real-time questions using the live chat and hand raising features.



ClassLive's calculator graphs equations and demonstrates formulas for the entire class.

The ClassLive synchronous whiteboard tool includes the following features.

Communications

- *Live Text Chat*
- *Closed Captioning*

Content Delivery Features

- *Whiteboard*
- *Graphing Calculator*

Classroom Management

- *Polling, Hand Raising, Stepped Out*
- *Recordings*
- *Moderator ESP (Elluminate Sensory Perception)*
- *Low Bandwidth Support*

ClassLive Pro—Synchronous Conferencing

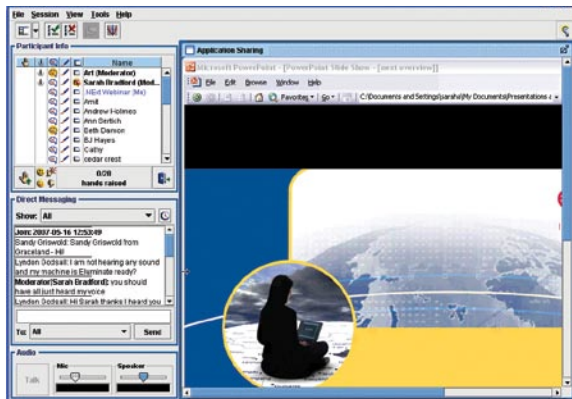
ClassLive Pro takes the robust whiteboard tool of ClassLive to the next level with voice and video capabilities. Utilizing two-way Voice over Internet Protocol (VoIP), ClassLive Pro enables instructors to be seen and heard by their students. In addition, with basic microphones and Webcams, instructors and students can speak to each other. By offering an enhanced user experience, ClassLive Pro promotes understanding, improves performance and creates a student community within online courses.

Application Sharing

Beyond the powerful multimedia capabilities of live voice and video, ClassLive Pro also enables full application sharing from the instructor's system to the students' screen. Application sharing is a terrific feature for interactive software instruction or demonstrations. This enhanced sharing tool also supports remote control. Faculty can give application control to students within the ClassLive Pro window. This enables true hands-on training.

Interactive Lectures

Using ClassLive Pro, an instructor can deliver a live, interactive lecture for a new software application to an entire online class. The instructor's lecture may include Microsoft PowerPoint® presentations, live video feeds and real-time demonstrations of the software. During the lecture, students can use their microphones to ask questions or give feedback. This interactive and immediate experience offers the face-to-face interaction of traditional classrooms within a virtual environment.



Beyond Synchronous VoIP capabilities, the ClassLive Pro conferencing tool offers richer and more interactive features than any other whiteboard tool.

Live, Enhanced Features

ClassLive Pro also offers Breakout Rooms. The Breakout Rooms feature allows students to work and communicate in separate groups within the ClassLive Pro environment. Instructors can move freely between the individual Breakout Rooms.

The WebTours feature supports synchronized Web browsing that guides students through multiple URLs in embedded windows. This feature allows classrooms to interact fully with Web sites and remain in the ClassLive Pro environment.



ClassLive Pro enhances class participation with live video.

ClassLive Pro offers the same basic features and functions found in ClassLive with the following enhancements.

Communications

- VoIP
- Video

Content Delivery Features

- Application Sharing
- Multimedia (Video Feeds)
- WebTours

Classroom Management

- Breakout Rooms
- Quiz Manager